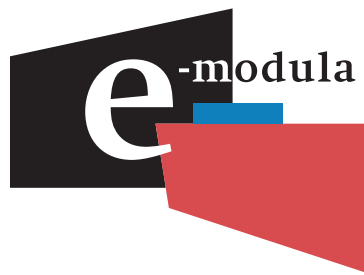




Block

Professional signage system components
Modular patented system for signage





Block

It is a discreet signage system designed to support acrylic and glass signs on walls and ceilings, which has an elegant feeling along with visibility and functionality. Manufactured with polished and chromed metal, this model is ideal for modern, constructive and minimalist interior styles.

Properties and Benefits

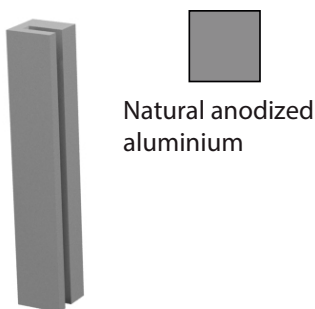
Simple: Modern system distinguished by its simplicity and beauty

Modular: Practicity of wall, flag and ceiling mounting

Installation: Includes an easy mounting and resistant wall fixing



Color alternatives

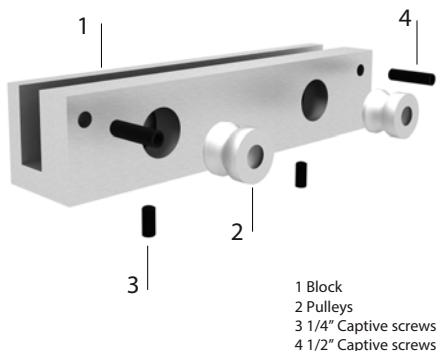


Natural anodized aluminium

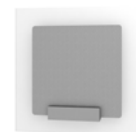


www.e-modula.com
info@e-modula.com
Azcapotzalco-La Villa Avenue 470,
Santa Catarina.02250, México,D.F.
Tel: (55) 5394-0143,Ext-30
Fax: (55) 5394-0143,Ext-26

System components



Mounting alternatives



Wall
Consist of two pulleys fixed to a wall in two simple steps

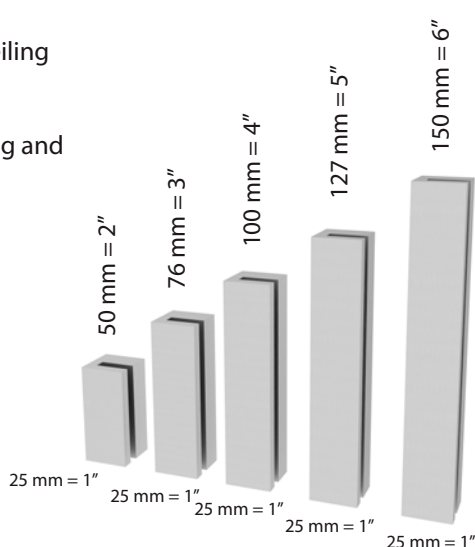


Flag
A lateral mounting function that enables to place the graphics 90° off the wall



Ceiling
It can also be easily ceiling mounted

Dimensions



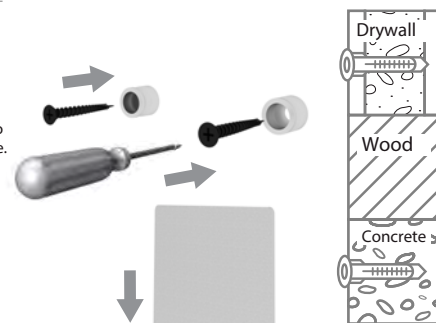
Models

Block 2" wall (Metal)
Block 3" wall (metal)
Block 4" wall (Metal)
Block 5" wall (Metal)
Block 6" wall (Metal)

Block 2" flag (Metal)
Block 3" flag (Metal)
Block 4" flag (Metal)
Block 5" flag (Metal)
Block 6" flag (Metal)

Mounting

Step 1
The pulleys must be fixed to the wall or preferred surface. On drywall or concrete a fastening rawl will be provided



Step 2
The printed panel (acrylic or glass) is placed on the block and secured with captive screws

Step 3
The block is mounted on the previously wall fixed pulleys and fastened with captive screws

Step 4
Done!
Your block system is ready



Note:
The panel can be labeled with vinyl serigraphy or digital print

Imagine the possibilities!