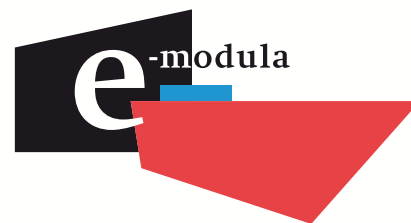


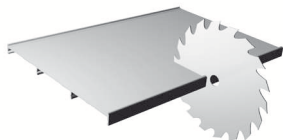
# CONSTRUCTION GUIDE

Basic guide to assemble e-modula Flat-Lip. This guide is not intended to cover all the methods to implement the product.



## FLAT-Lip Wall

1.-



Cut the module to the desired size.

2.-



Attach clips to wall with double faced adhesive or screws.

3.-



Print your design.

4.-



Insert design into module, if needed cover design with non-glare clear lens of up to 0.030 in.

5.-



Snap-Fit module on clips.

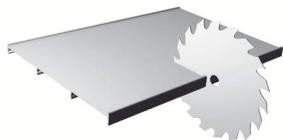
6.-



Your sign is finished!

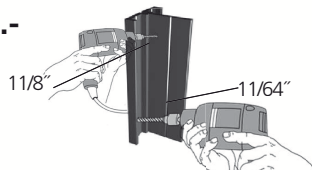
## FLAT-Lip Projecting

1.-



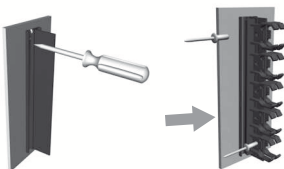
Cut the module to the desired size.

2.-



Drill holes in flag mount to screw to wall and drill holes to fix clips with 1/8\"/>

3.-



Screw wall mount to wall using 1/8\"/>

4.-



Insert design into module, if needed cover design with non-glare clear lens of up to 0.030 in.

5.-



Snap-Fit modules on clips

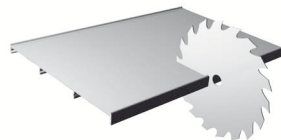
6.-



Your sign is finished!

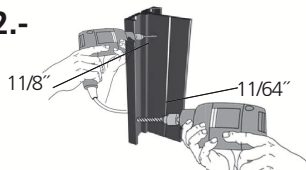
## FLAT-Lip Suspended

1.-



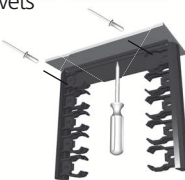
Cut the module to the desired size.

2.-



Drill holes in ceiling mount to screw to ceiling and drill holes to fix clips with 1/8\"/>

3.-



Attach two clips to each side of ceiling mount using 1/8\"/>

4.-



Insert design into module, if needed cover design with non-glare clear lens of up to 0.030 in.

5.-



Snap-Fit modules on clips.

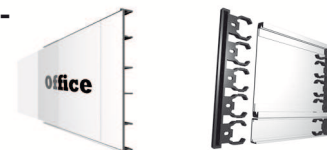
6.-



Your sign is finished!

## FLAT-Lip Table stands

1.-



Snap-Fit modules on clips.

2.-



Snap-fit table mount to module

3.-



Your sign is finished!

Where to buy 

www.e-modula.com  
rolando.lemus@e-modula.com  
600 Wichita suite 507  
78503 Mcallen, Texas  
U.S.A  
Ph. (281) 436-7030

WORLD WIDE  
www.e-modula.com  
info@e-modula.com