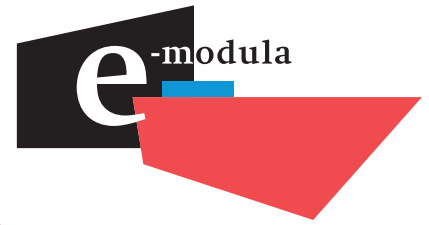


CONSTRUCTION GUIDE

Basic guide to assemble e-modula Flat. This guide is not intended to cover all the methods to implement the product.

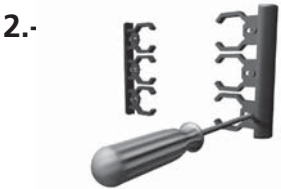


FLAT

Wall



Cut the module to the desired size.



Attach clips to wall with double faced adhesive or screws.



Print your design



Snap-Fit module on clips.



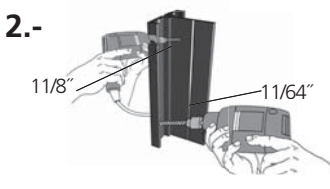
Your sign is finished!

FLAT

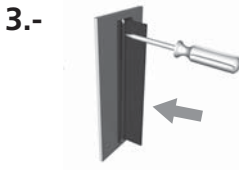
Projecting



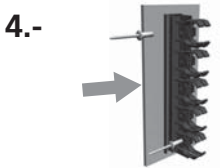
Cut the module to the desired size.



Drill holes in flag mount to screw to wall and drill holes to fix clips with 1/8" rivets.



Screw wall mount to wall using 1/8" X 1" screws.



Attach both clips to each side of wall mount using 1/8" by 2" rivets.



Snap-Fit modules on clips



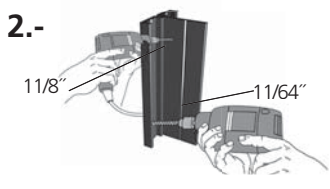
Your sign is finished!

FLAT

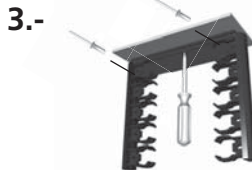
Suspended



Cut the module to the desired size.



Drill holes in ceiling mount to screw to ceiling and drill holes to fix clips with 1/8" rivets



Attach two clips to each side of ceiling mount using 1/8" by 2" rivets.



Snap-Fit modules on clips.



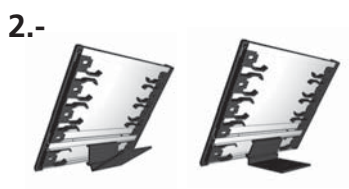
Your sign is finished!

FLAT

Table stands



Snap-Fit modules on clips.



Snap-fit table mount to module



Your sign is finished!

Where to buy

www.e-modula.com
rolando.lemus@e-modula.com
600 Wichita suite 507
78503 Mcallen, Texas
U.S.A
Ph. (281) 436-7030

WORLD WIDE
www.e-modula.com
info@e-modula.com