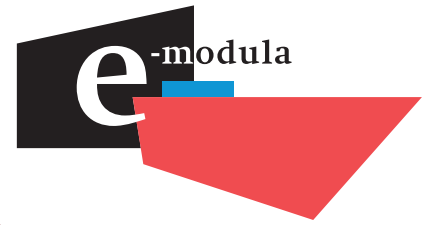


CONSTRUCTION GUIDE

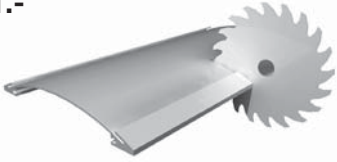
Basic guide to assemble e-modula Curved. This guide is not intended to cover all the methods to implement the product.



CURVED

Wall

1.-



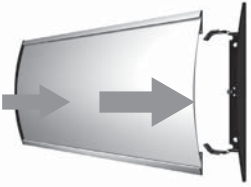
Cut the module to the desired size.

2.-



Attach clips to wall with double faced adhesive or screws.

3.-



Snap-Fit module on the clips.

4.-



Print, cut, silk screen or route your design.

5.-



Insert design into module, if needed cover design with non-glare clear lens of up to 0.030 in.

6.-

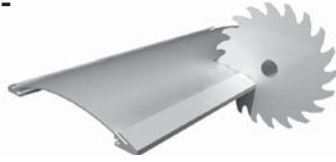


Your sign is finish!

CURVED

Projecting

1.-



Cut the module to the desired size.

2.-



Insert design into module, if needed cover design with non-glare clear lens of up to 0.030 in.

3.-



Snap fit modules on clips.

4.-



Screw projecting mounting option on modules using a 5/32" allen screw.

5.-



Screw the projecting mounting option to wall using an 11/64 drill.

6.-



Your sign is finish!

CURVED

Suspended

1.-



Insert design into module, if needed cover design with non-glare clear lens of up to 0.030 in.

2.-



Join two clips using 1/8" by 2 rivets.

3.-



Insert monofilament nylon cord for 50 pounds in the holes.

4.-



Snap-fit clips on both sides of both modules.

5



Your sign is finish!

CURVED

Table stands

1.-



Screw Table Stand mounting option to both sides of module.

2.-



Insert design into module, if needed cover design with non-glare clear lens of up to 0.030 in.

Your sign is finish!

Where to buy 

www.e-modula.com
rolando.lemus@e-modula.com
600 Wichita suite 507
78503 Mcallen, Texas
U.S.A
Ph. (281) 436-7030

WORLD WIDE
www.e-modula.com
info@e-modula.com